

## A – 9 Wireless Bağlantı Kılavuzu

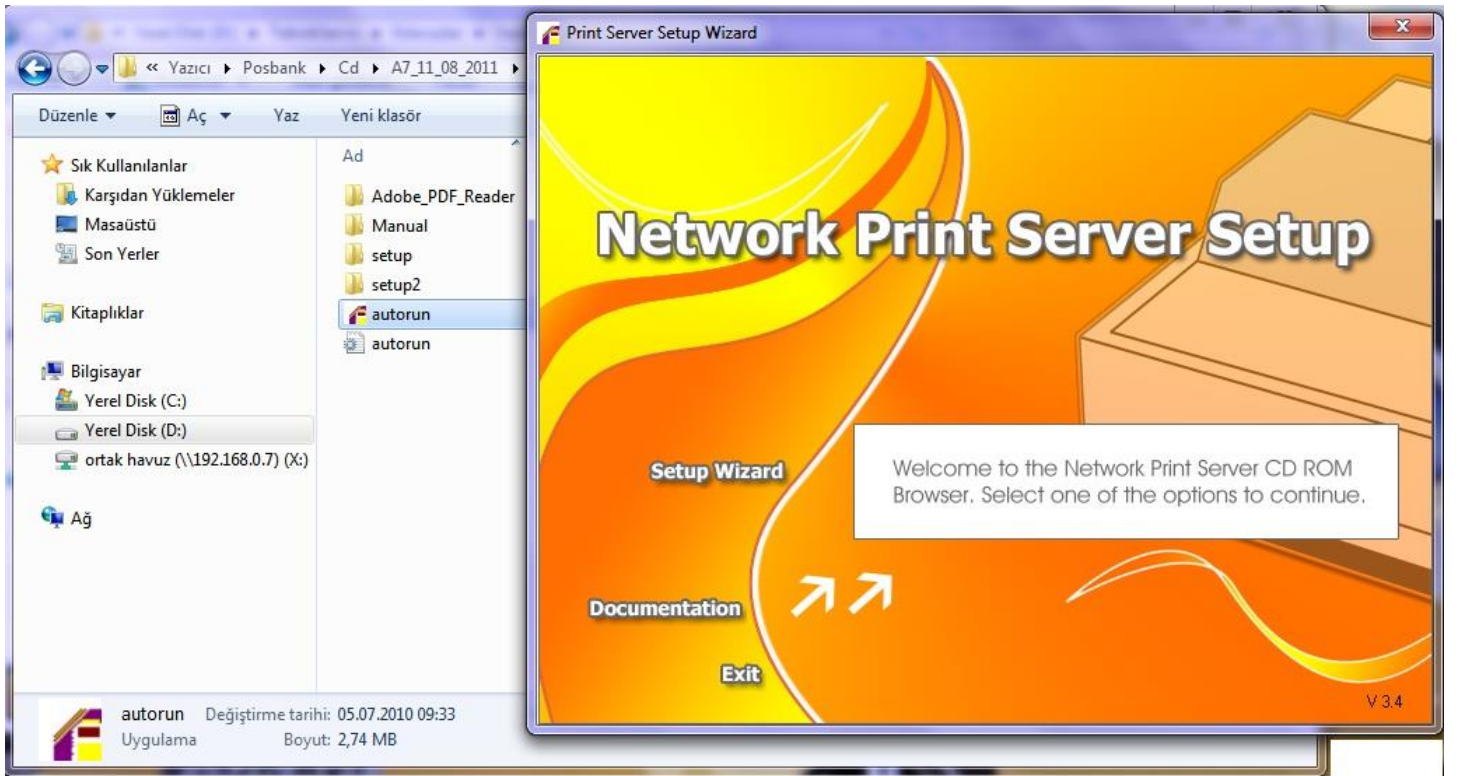
Aşağıdaki kılavuz Win XP – Win Vista ve Win.7 sistemlerinde kullanım içindir.

İşletim sisteminiz Win 7 Starter veya Home sürüm ise kurulumda sorun yaşanabilir.

Cd içinden win.driver klasörü içindeki yazıcınız için uygun olan sürücüyü çalıştırınız. Sürücü kurulumunu com veya lpt bağlantı seçerek tamamlayınız.

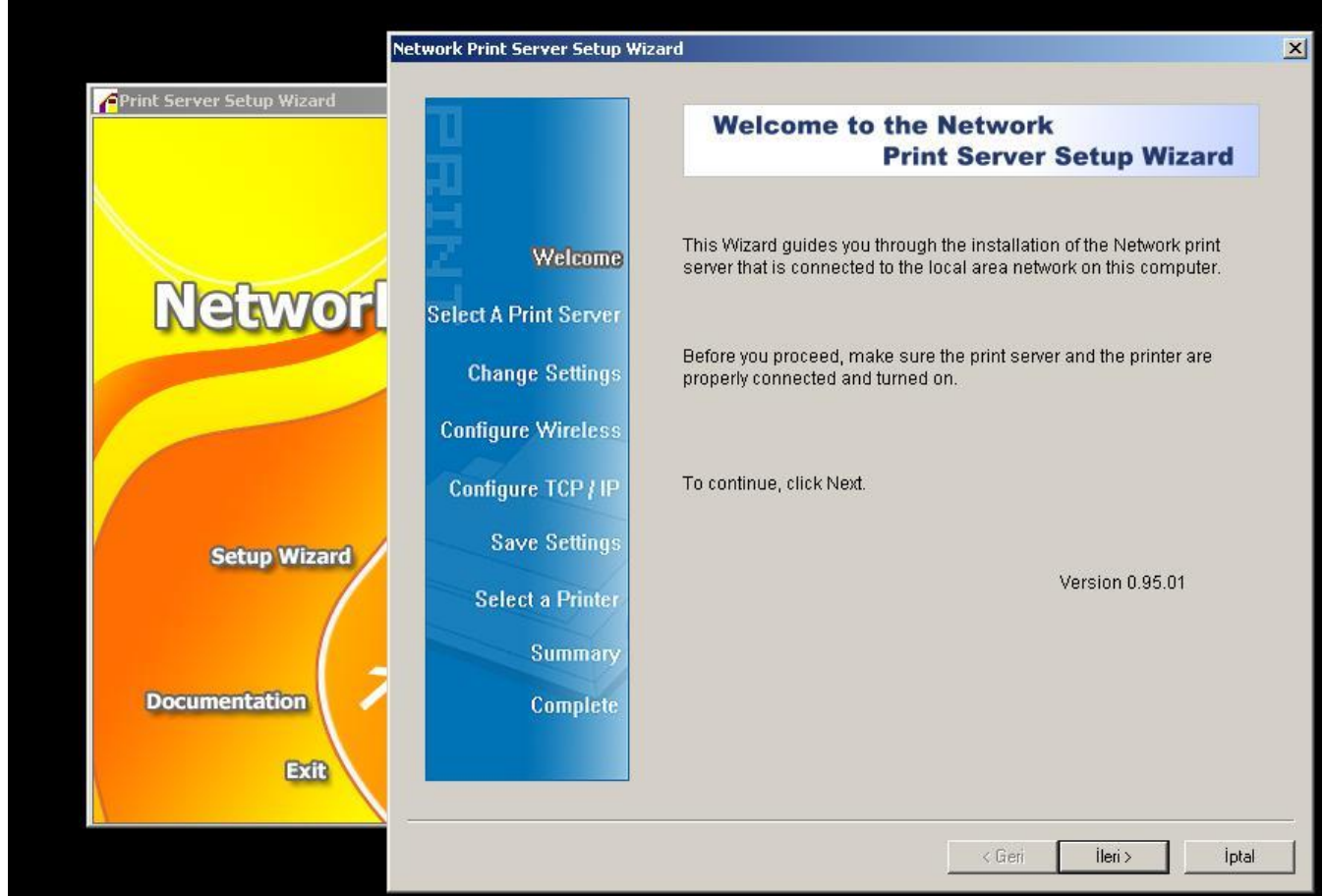
Yazıcıyı Ethernet port üzerinden kablo ile ağa bağlayınız.

Sonra yine cd içinden Ethernet Interface klasörü içindeki Autorun dosyasını çalıştırınız.



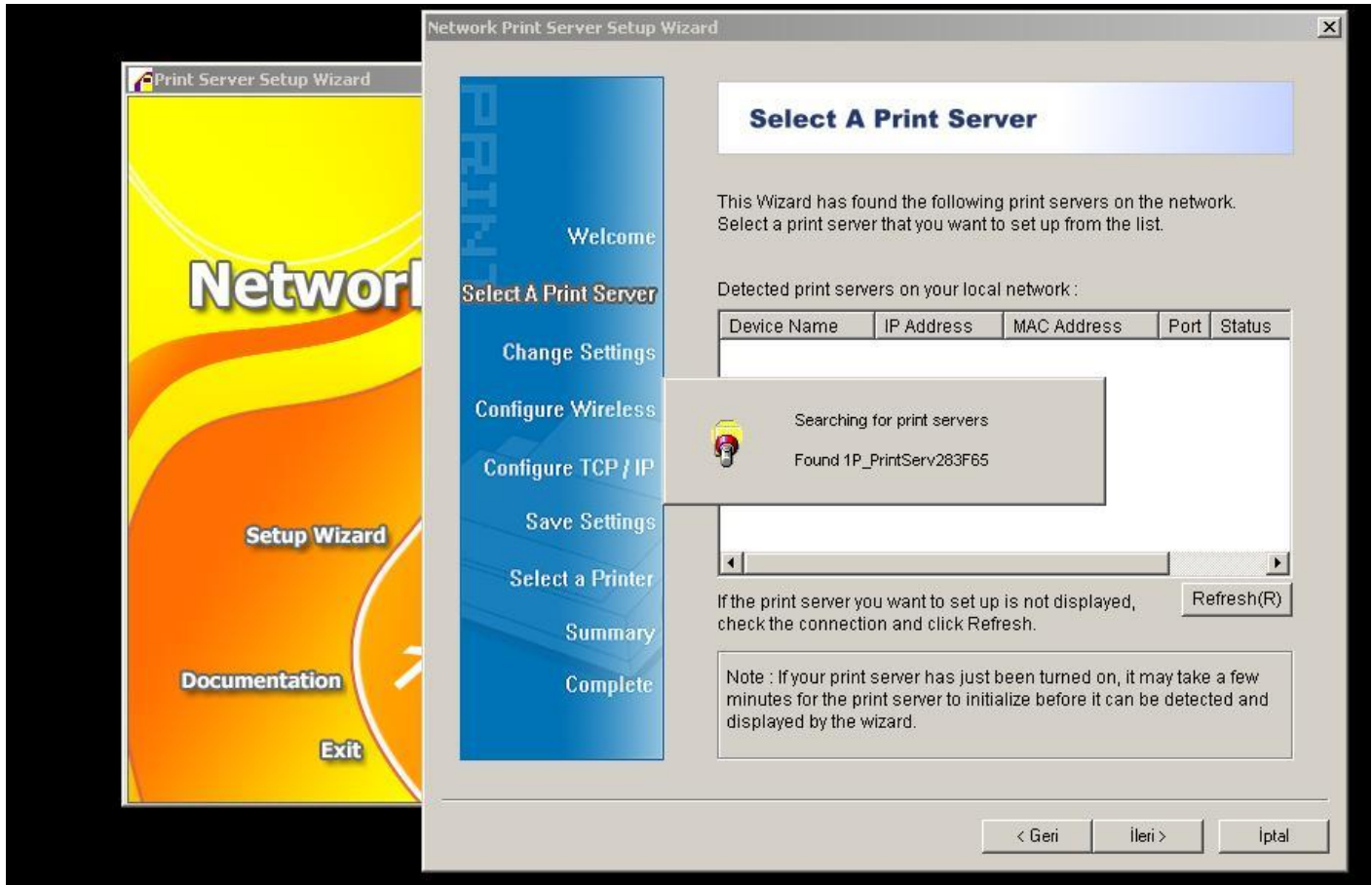
Bilgisayarınızda masa üzerinde PS Wizard  kısa yolunu oluşturur.

Programı alıřtırınız.

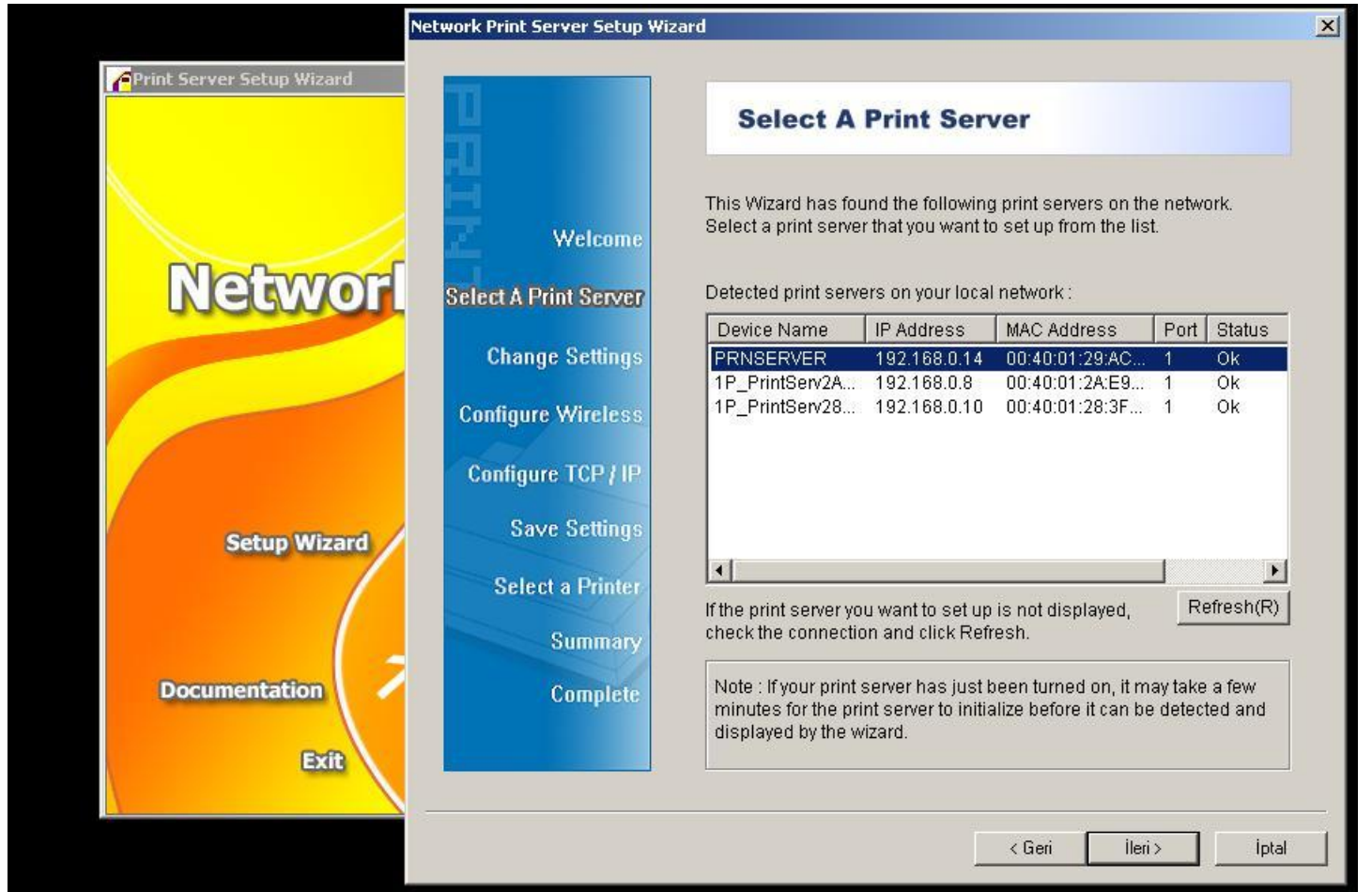


İleri diyerek devam ediniz.

Program, sisteminize baęlı olan yazıcıları bulacaktır.

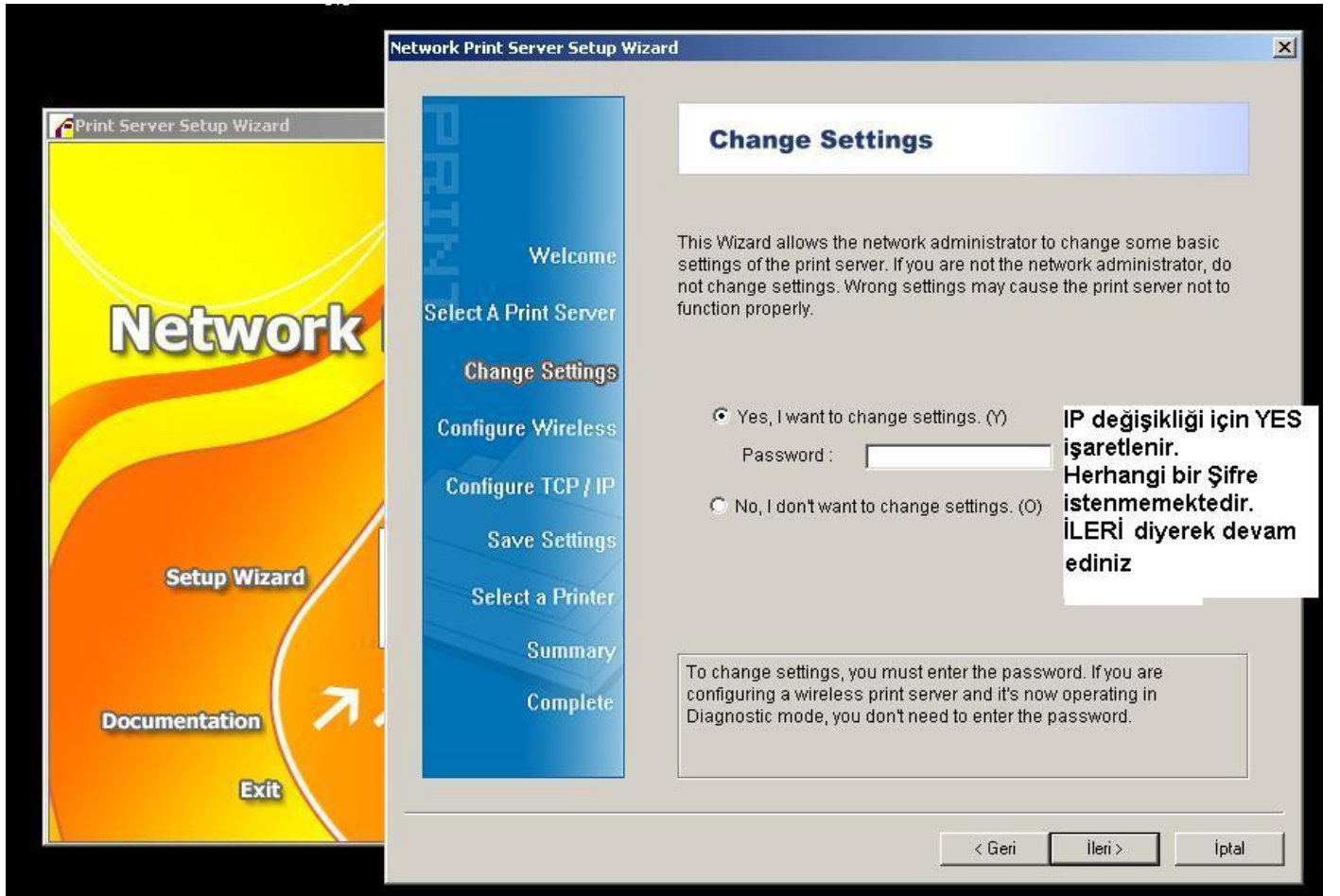


İlgili yazıcıyı seçip, ileri diyerek devam ediniz.



Gerekıyor ise, IP değışikliđi için

**Yes,I want to change setting** seçeneđini işaretleyiniz.



İleri diyerek devam ediniz

Wireless sistem ayarları ařağıdaki gibi ayarlanır.



**Network Print Server Setup Wizard**

Welcome

Select A Print Server

Change Settings

**Configure Wireless**

Configure TCP / IP

Save Settings

Select a Printer

Summary

Complete

### Basic Wireless Settings

Configure the following wireless settings on the print server. These settings must match your wireless network for the print server to communicate with all computers over a wireless connection.

Communication Type : **Infrastructure**

SSID : **ASUS**

Channel Number : **6**

Data Transmit Rates : **Auto**

Transmit Mode : **Auto**

1. In Infrastructure (Access Point) mode, the wireless network print server will communicate with network computers through an Access Point.

2. In Ad-Hoc or 802.11b Ad-Hoc mode, wireless devices communicate with each other directly.

If the communication type is 'Infrastructure (Access Point)', you do not have to enter the Channel number used by the Access Point.

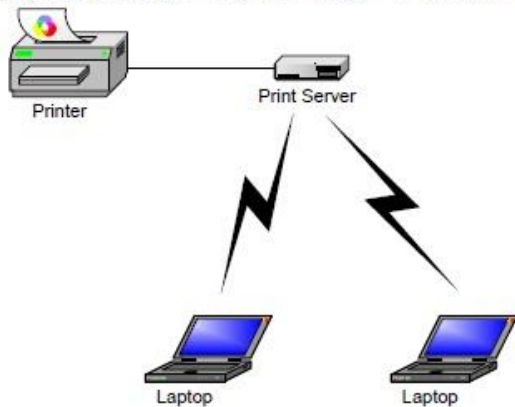
< Geri İleri > İptal

**Ad-Hoc : Pc ile doğruan bağlantı**  
**Infrastructure : Access Point üzerinden bağlantı**

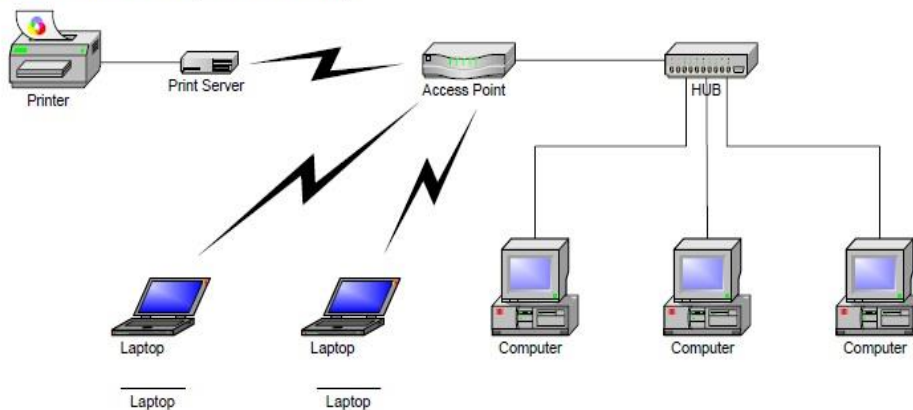
**SSID : Bağlanılacak ağ adı.**

## Wireless Network with Print Server:

Ad-Hoc mode (Peer to Peer) – Factory Default:



Infrastructure mode (Access Point):



Network Print Server Setup Wizard

Welcome

Select A Print Server

Change Settings

**Configure Wireless**

Configure TCP / IP

Save Settings

Select a Printer

Summary

Complete

### Wireless Security

This page allows you to set up the print server's security feature for safeguarding the wireless connection.

Authentication Type : Open System

Encryption : Open System

1. For 64-bit (sometimes called 40-bit) WEP encryption, enter the key which contains 5 alphanumeric character or 10 hexadecimal digits (depending on the key format you select)

2. For 128-bit WEP encryption, enter the key which contains 13 alphanumeric characters or 26 hexadecimal digits (depending on the key format you select)

(An alphanumeric character is a through z, A through Z, and 0 through 9. A hexadecimal digit is 0 through 9 and A through F)

Note: The key is case-sensitive. A print server is accessible if the security settings above all matches Access Point's settings.

< Geri İleri > İptal

İleri diyerek devam ediniz.

Network Print Server Setup Wizard

Welcome

Select A Print Server

Change Settings

**Configure Wireless**

Configure TCP / IP

Save Settings

Select a Printer

Summary

Complete

### Wireless Security

This page allows you to set up the print server's security feature for safeguarding the wireless connection.

Authentication Type : Open System

Encryption : None

1. For 64-bit (sometimes called 40-bit) WEP encryption, enter the key which contains 5 alphanumeric character or 10 hexadecimal digits (depending on the key format you select)

2. For 128-bit WEP encryption, enter the key which contains 13 alphanumeric characters or 26 hexadecimal digits (depending on the key format you select)

(An alphanumeric character is a through z, A through Z, and 0 through 9. A hexadecimal digit is 0 through 9 and A through F)

Note: The key is case-sensitive. A print server is accessible if the security settings above all matches Access Point's settings.

< Geri İleri > İptal



Network Print Server Setup Wizard

## Wireless Security

This page allows you to set up the print server's security feature for safeguarding the wireless connection.

Authentication Type : Open System

Encryption : WEP-64bit

Key Format : Alphanumeric

WEP Key :

**Ağ şifresi**

1. For 64-bit (sometimes called 40-bit) WEP encryption, enter the key which contains 5 alphanumeric character or 10 hexadecimal digits (depending on the key format you select)

2. For 128-bit WEP encryption, enter the key which contains 13 alphanumeric characters or 26 hexadecimal digits (depending on the key format you select)

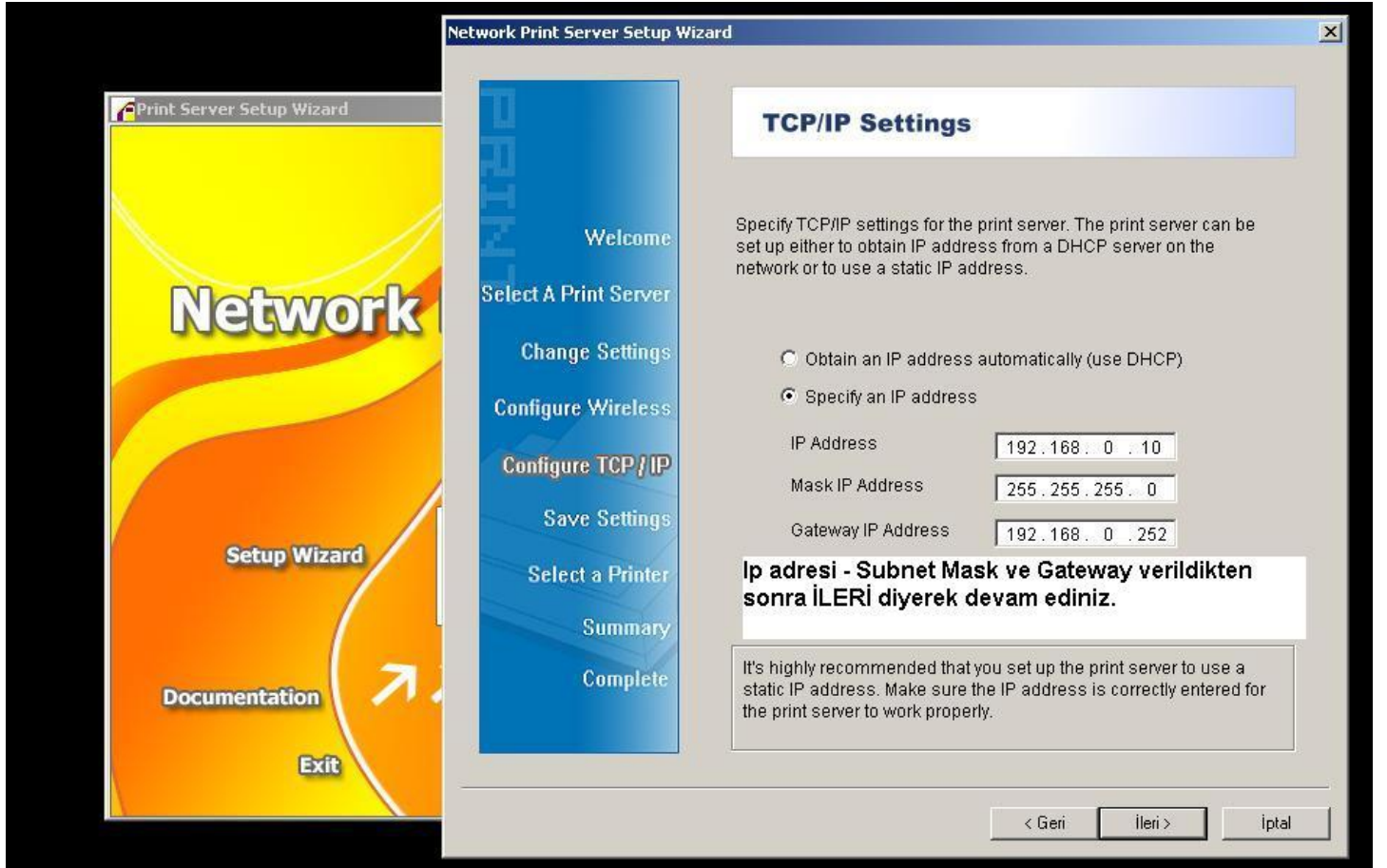
(An alphanumeric character is a through z, A through Z, and 0 through 9. A hexadecimal digit is 0 through 9 and A through F)

Note: The key is case-sensitive. A print server is accessible if the security settings above all matches Access Point's settings.

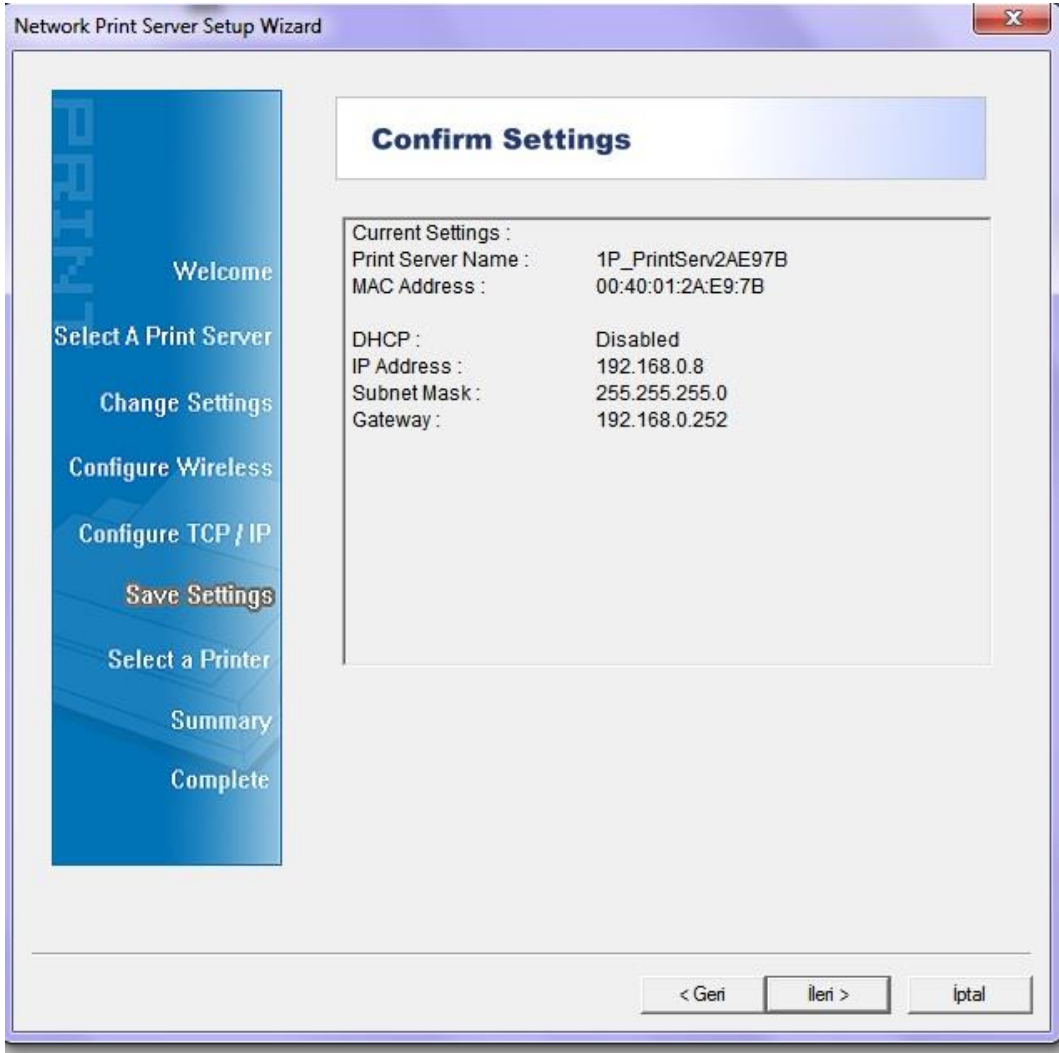
< Geri İleri > İptal

İleri diyerek devam ediniz.

Wireless ayarından sonra, yazıcıya vermemiz gereken ip adresi Gateway gibi deęerleri ařaęıdaki gibi yazınız.

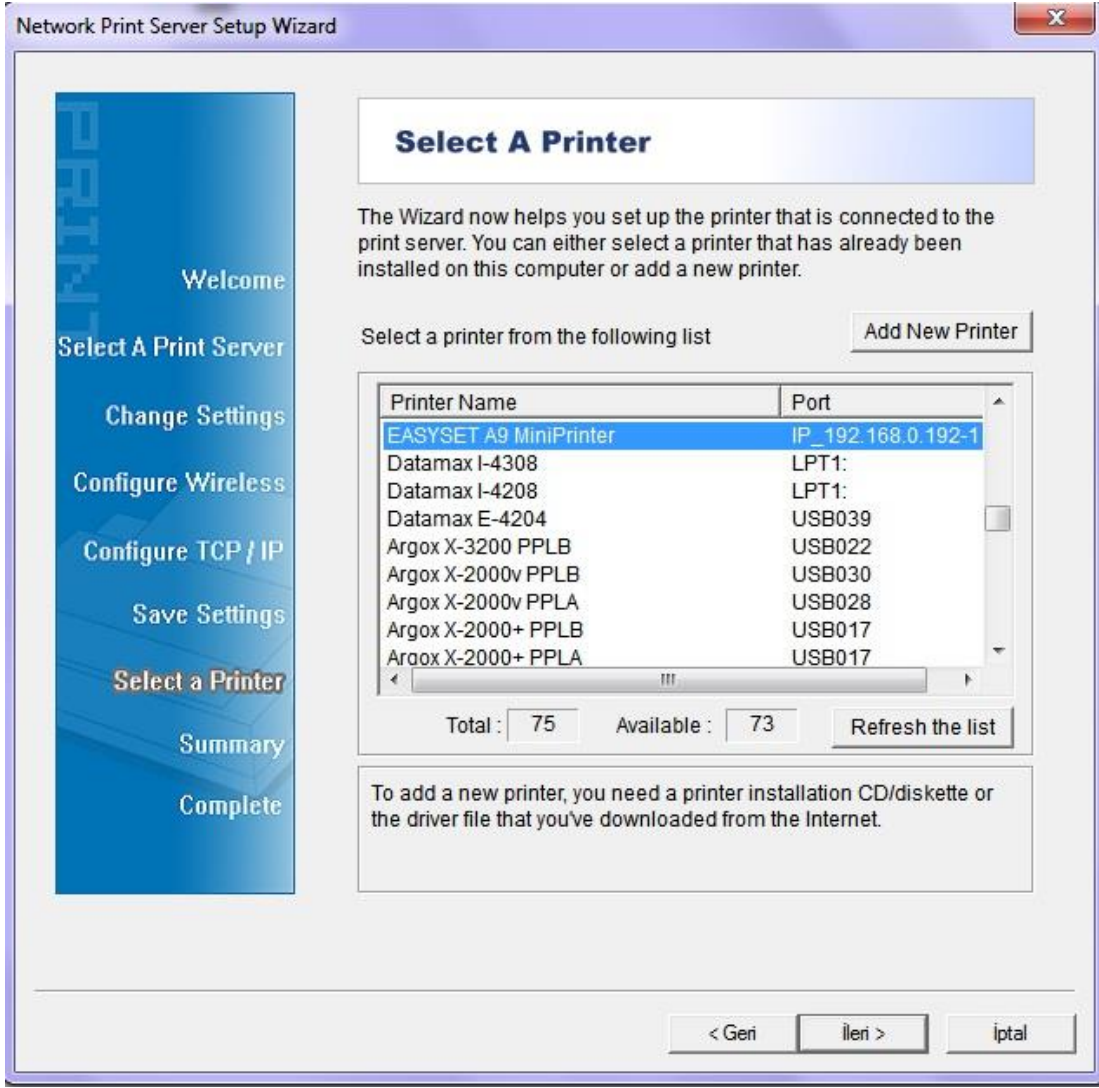


İleri diyerek devam ediniz.



İleri diyerek devam ediniz.

Printer seçim tablosundan, daha önce com veya lpt olarak kumuş olduğunuz yazıcıyı seçiniz.



İleri diyerek devam ediniz.

Sistem vermiş olduğunuz IP adresini yazıcı üzerine tanımlayacaktır.

Bilgisayarınızda, yazılar klasörüne giderek, sına ma sayfası yazdırabilir siniz.

PERKON TEKNİK SERVİS

Yasin GENÇ – Murat ÜNAL