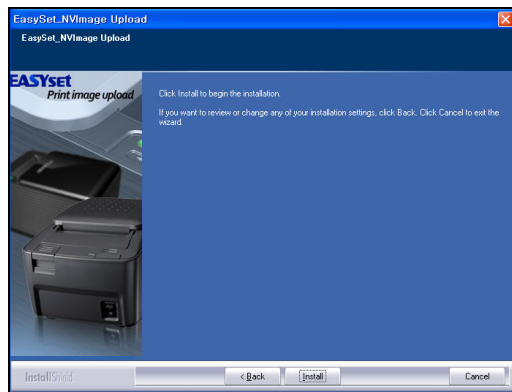




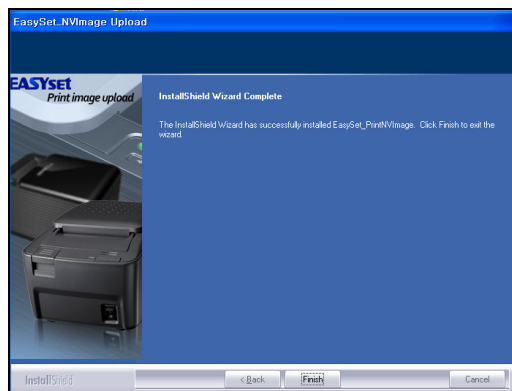
NVImage Install Guide

Image uploading tool for ECP-500, A 9, A 10 printer and internal printer of IMPREX

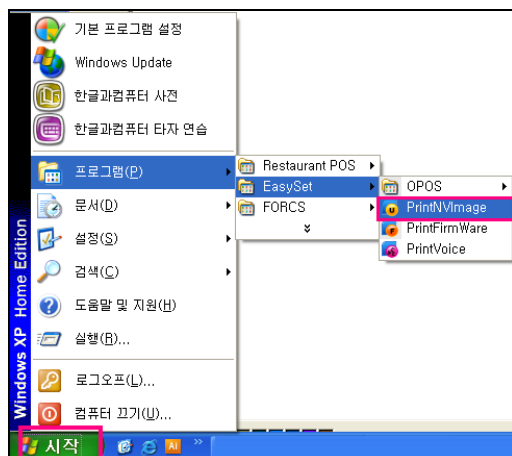
1. Install



Start Installing

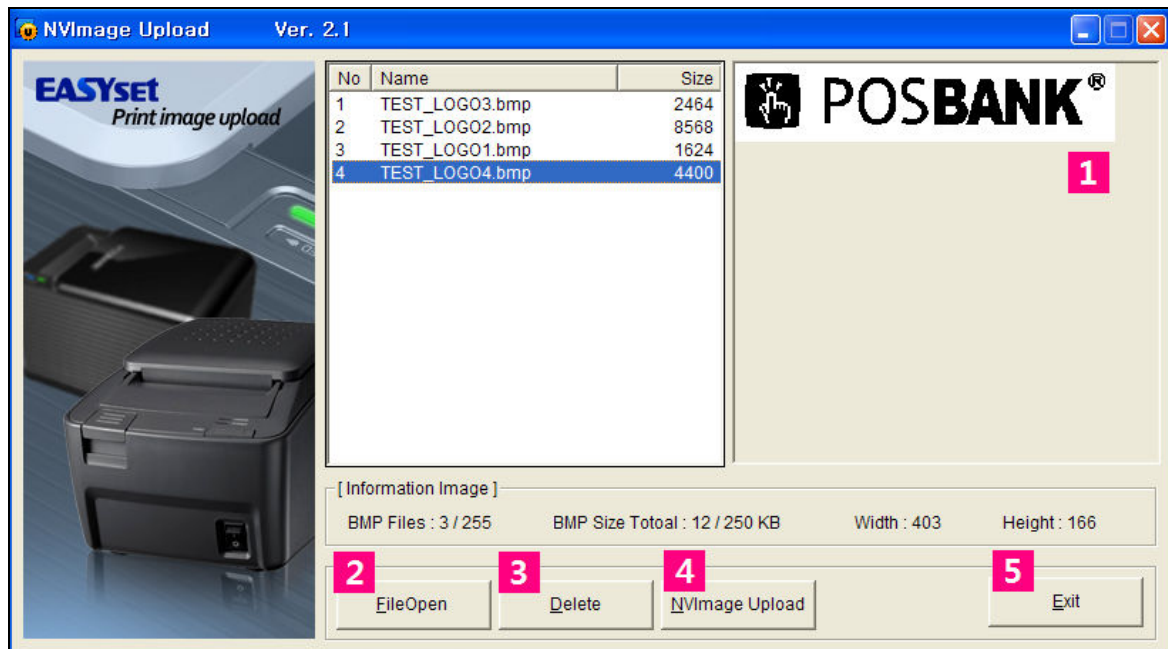


Installing finishes

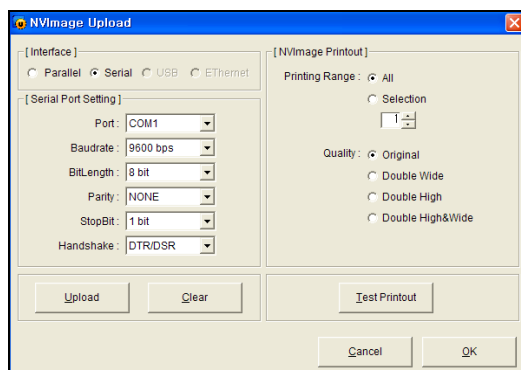
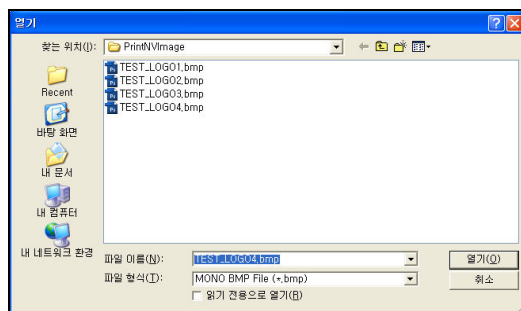


Run [Start] – [Program] – [EazySet] – [PrintNVImage]

2. Setting



① Preview the image	② Open file	③ Delete image
④ Apply the image to the printer (To apply the image, open the image file in advance)	⑤ Exit	



Step 1 : Click ② [File Open]



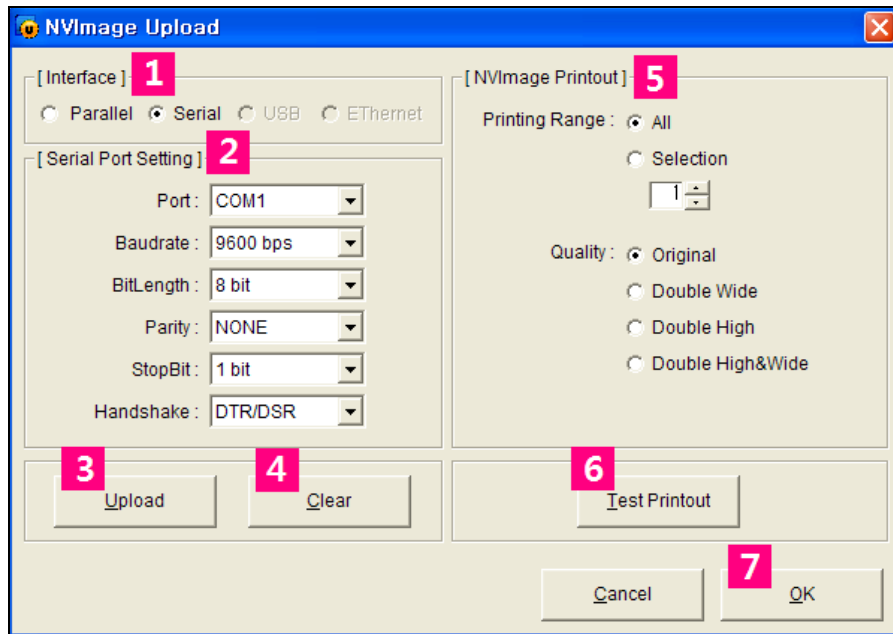
Caution

Only bmp file with single color can be applied

Step 2 : Confirm the image with preview

Step 3 : Click ④의 [NVImage Upload]

Step 4 : Select [Interface], [Serial Port Setting],
[NVImage Printout]



① Interface	Select interface type.
② Serial Port Setting	Choose to select serial port setting
③ Upload	It will apply the image
④ Clear	It will delete the image
⑤ NVImage Printout	Printing Range : Choose between All or Selection Quality : Choose among Double Wide, Double High, Double High&Wide
⑥ Test Printout	It prints out test page
⑦ OK	Finish setting

Step 5 : Confirm the image by running test printout

Step 6 : Click [Upload]

Step 7 : Click [OK]

Applied image will be printed out once setting is completed.